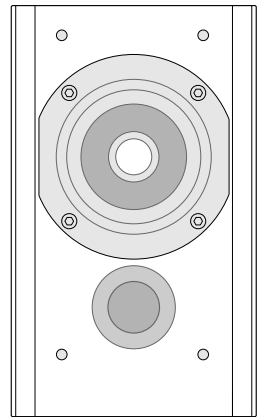
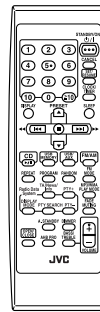
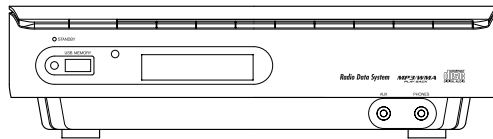
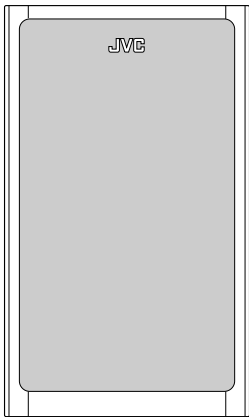


# JVC



## MICRO COMPONENT SYSTEM

# UX-E15

 — Consists of CA-UXE15 and SP-UXE15

COMPACT  
**disc**  
DIGITAL AUDIO

**MP3/WMA**  
PLAYBACK

**Radio Data System**



## INSTRUCTIONS

## Warnings, Cautions and Others

### IMPORTANT for the U.K.

DO NOT cut off the mains plug from this equipment. If the plug fitted is not suitable for the power points in your home or the cable is too short to reach a power point, then obtain an appropriate safety approved extension lead or consult your dealer.

**BE SURE** to replace the fuse only with an identical approved type, as originally fitted.

If nonetheless the mains plug is cut off ensure to remove the fuse and dispose of the plug immediately, to avoid a possible shock hazard by inadvertent connection to the mains supply.

If this product is not supplied fitted with a mains plug then follow the instructions given below:

### IMPORTANT:

**DO NOT** make any connection to the terminal which is marked with the letter E or by the safety earth symbol or coloured green or green-and-yellow.

The wires in the mains lead on this product are coloured in accordance with the following code:

Blue : Neutral

Brown : Live

As these colours may not correspond with the coloured markings identifying the terminals in your plug proceed as follows:

The wire which is coloured blue must be connected to the terminal which is marked with the letter N or coloured black.

The wire which is coloured brown must be connected to the terminal which is marked with the letter L or coloured red.

IF IN DOUBT - CONSULT A COMPETENT ELECTRICIAN.

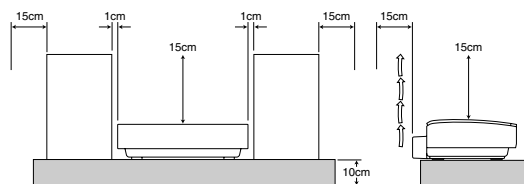
### About the cooling fan

A cooling fan is mounted on the right side of the unit to prevent abnormal temperature inside the unit, thus assuring normal operation of the unit. The cooling fan automatically starts rotating to intake external cool air when the volume is increased up to more than a certain level.

### CAUTION

To reduce the risk of electric shocks, fire, etc.:

- 1 Do not remove screws, covers or cabinet.
- 2 Do not expose this appliance to rain or moisture.



### IMPORTANT FOR LASER PRODUCTS

1. CLASS 1 LASER PRODUCT
2. CAUTION: Do not open the top cover. There are no user serviceable parts inside the Unit; leave all servicing to qualified service personnel.
3. CAUTION: Visible and invisible laser radiation when open and interlock failed or defeated. Avoid direct exposure to beam.
4. REPRODUCTION OF LABEL: CAUTION LABEL, PLACED INSIDE THE UNIT.

<b>CAUTION :</b> Visible and invisible laser radiation when open and interlock failed or defeated. AVOID DIRECT EXPOSURE TO BEAM.	<b>ADVARSEL :</b> Synlig og usynlig laserstråling når maskinen er åpen eller interlocken fejler. Unngå direkte eksponering til stråling.	<b>WARNING :</b> Synlig och osynlig laserstråling när lock öppnas och spärren är urkopplad. Beträkta strålen.	<b>VARO :</b> Avattaessa ja suojalukitus ohitettuna tai viallisena olet alttina näkyvälle ja näkymättömälle lasersträlylle. Vältä silmien kohdistumista suoraan lasseen. (1)
---	--	---	--

### CAUTION

- 1 Do not block the ventilation openings or holes. (If the ventilation openings or holes are blocked by a newspaper or cloth, etc., the heat may not be able to get out.)
- 2 Do not place any naked flame sources, such as lighted candles, on the apparatus.
- 3 When discarding batteries, environmental problems must be considered and local rules or laws governing the disposal of these batteries must be followed strictly.
- 4 Do not expose this apparatus to rain, moisture, dripping or splashing and that no objects filled with liquids, such as vases, shall be placed on the apparatus.

### Caution — /STANDBY/ON button!

Disconnect the mains plug to shut the power off completely (all lamps and indications go off). The /STANDBY/ON button in any position does not disconnect the mains line.

- When the unit is on standby, the STANDBY lamp lights red.
- When the unit is turned on, the STANDBY lamp goes off.

The power can be remote controlled.

### Caution: Proper Ventilation

To avoid risk of electric shock and fire, and to prevent damage, locate the apparatus as follows:

- 1 Front: No obstructions and open spacing.
- 2 Sides/ Top/ Back: No obstructions should be placed in the areas shown by the dimensions below.
- 3 Bottom: Place on the level surface. Maintain an adequate air path for ventilation by placing on a stand with a height of 10 cm or more.

## **SAFETY INSTRUCTIONS**

### **“SOME DOS AND DON'TS ON THE SAFE USE OF EQUIPMENT”**

This equipment has been designed and manufactured to meet international safety standards but, like any electrical equipment, care must be taken if you are to obtain the best results and safety is to be assured.

Do read the operating instructions before you attempt to use the equipment.

Do ensure that all electrical connections (including the mains plug, extension leads and interconnections between pieces of equipment) are properly made and in accordance with the manufacturer's instructions. Switch off and withdraw the mains plug when making or changing connections.

Do consult your dealer if you are ever in doubt about the installation, operation or safety of your equipment.

Do be careful with glass panels or doors on equipment.

DON'T continue to operate the equipment if you are in any doubt about it working normally, or if it is damaged in any way—switch off, withdraw the mains plug and consult your dealer.

DON'T remove any fixed cover as this may expose dangerous voltages.

DON'T leave equipment switched on when it is unattended unless it is specifically stated that it is designed for unattended operation or has a standby mode.

Switch off using the switch on the equipment and make sure that your family know how to do this.

Special arrangements may need to be made for infirm or handicapped people.

DON'T use equipment such as personal stereos or radios so that you are distracted from the requirements of traffic safety. It is illegal to watch television whilst driving.

DON'T listen to headphones at high volume as such use can permanently damage your hearing.

DON'T obstruct the ventilation of the equipment, for example with curtains or soft furnishings.

Overheating will cause damage and shorten the life of the equipment.

DON'T use makeshift stands and NEVER fix legs with wood screws — to ensure complete safety always fit the manufacturer's approved stand or legs with the fixings provided according to the instructions.

DON'T allow electrical equipment to be exposed to rain or moisture.

ABOVE ALL

- NEVER let anyone, especially children, push anything into holes, slots or any other opening in the case - this could result in a fatal electrical shock.;
- NEVER guess or take chances with electrical equipment of any kind.  
it is better to be safe than sorry!

#### **Information for Users on Disposal of Old Equipment**



**Attention:**  
This symbol is only valid in the European Union.

##### **[European Union]**

This symbol indicates that the electrical and electronic equipment should not be disposed as general household waste at its end-of-life. Instead, the product should be handed over to the applicable collection point for the recycling of electrical and electronic equipment for proper treatment, recovery and recycling in accordance with your national legislation.

By disposing of this product correctly, you will help to conserve natural resources and will help prevent potential negative effects on the environment and human health which could otherwise be caused by inappropriate waste handling of this product. For more information about collection point and recycling of this product, please contact your local municipal office, your household waste disposal service or the shop where you purchased the product.

Penalties may be applicable for incorrect disposal of this waste, in accordance with national legislation.









##### **(Business users)**

If you wish to dispose of this product, please visit our web page [www.jvc-europe.com](http://www.jvc-europe.com) to obtain information about the take-back of the product.

##### **[Other Countries outside the European Union]**

If you wish to dispose of this product, please do so in accordance with applicable national legislation or other rules in your country for the treatment of old electrical and electronic equipment.

# Contents

<b>Introduction</b> .....	<b>2</b>
Precautions.....	2
How to Read This Manual.....	3
<b>Getting Started</b> .....	<b>4</b>
Step 1: Unpack .....	4
Step 2: Prepare the Remote Control.....	4
Step 3: Hook Up.....	5
To assemble and connect the AM loop antenna.....	7
To connect the speaker cords.....	7
<b>Before Operating the System</b> .....	<b>8</b>
<b>Daily Operations — Playback —</b> .....	<b>9</b>
Listening to the Radio.....	10
Playing Back a Disc.....	11
Playing Back from the USB Memory or Digital Audio Player.....	12
Playing Back from the PC.....	13
Playing Back from Other Equipment.....	14
Receiving FM Stations with Radio Data System .....	14
<b>Daily Operations — Sound &amp; Other Adjustments —</b> .....	<b>18</b>
Adjusting the Volume .....	18
Adjusting the Sound  .....	18
Changing the Display Brightness — DIMMER  .....	19
Setting the Clock  .....	19
Turning Off the Power Automatically  .....	20
<b>Advanced Disc /USB Memory/DAP Operations</b> .....	<b>21</b>
Programming the Playing Order—Program Play  .....	21
Playing at Random — Random Play  .....	22
Playing Repeatedly — Repeat Play  .....	23
<b>Timer Operations</b> .....	<b>24</b>
Setting the Timer  .....	24
<b>Additional Information</b> .....	<b>26</b>
Learning More about This System.....	26
Troubleshooting .....	27
Maintenance .....	27
Specifications.....	28
Parts Index.....	29

# Introduction

Thank you for purchasing the JVC Micro Component System.

We hope it will be a valued addition to your home, giving you years of enjoyment.

Be sure to read this instruction manual carefully before operating your new stereo system.

In it you will find all the information you need to set up and use the system.

If you have a query that is not answered by the manual, please contact your dealer.

## Precautions

### Installation

- *Install in a place which is level, dry and neither too hot nor too cold—between 5°C and 35°C.*
- *Install the System in a location with adequate ventilation to prevent internal heat buildup inside the System.*



DO NOT install the System in a location near heat sources, or in a place subject to direct sunlight, excessive dust or vibration.

- *Leave sufficient distance between the System and the TV.*
- *Keep the speakers away from the TV to avoid interference with TV.*

### Power sources

- *When unplugging the System from the wall outlet, always pull on the plug, not the AC power cord.*



DO NOT handle the AC power cord with wet hands.

### Moisture condensation

Moisture may condense on the lenses inside the System in the following cases:

- *After starting to heat the room*
- *In a damp room*
- *If the System is brought directly from a cold to a warm place*

Should this occur, the System may malfunction. In this case, leave the System turned on for a few hours until the moisture evaporates, unplug the AC power cord, then plug it in again.

### Internal heat

- *A cooling fan is mounted on the right side of the unit to prevent heat buildup inside the main unit (see page G-1).*



#### For safety, observe the following carefully:

- *Make sure there is good ventilation the main unit. Poor ventilation could overheat and damage the System.*
- *DO NOT block the cooling fan and the ventilation openings or holes. If they are blocked by a newspaper or cloth, etc., the heat may not be able to get out.*

## Others

- *Should any metallic object or liquid fall into the System, unplug the AC power cord and consult your dealer before operating any further.*



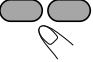


	DO NOT disassemble the System since there are no user serviceable parts inside.
---	---

- *If you are not going to operate the System for an extended period of time, unplug the AC power cord from the wall outlet. If anything goes wrong, unplug the AC power cord and consult your dealer.*

### How to Read This Manual

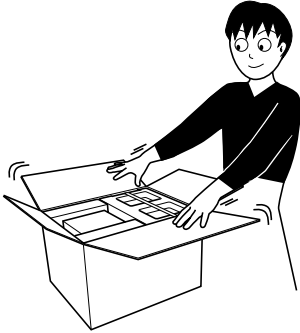
To make this manual as simple and easy-to-understand as possible, we have adapted the following methods:

- *Button and control operations are explained as listed in the table below. In this manual, the operations using the remote control is mainly explained; however, you can use the buttons and controls on the main unit if they have the same (or similar) name and marks.*
- *Some related tips and notes are explained later in the sections “Learning More about This System” and “Troubleshooting,” but not in the same section explaining the operations. If you want to know more about the functions, or if you have a doubt about the functions, go to these sections and you will find the answers.*

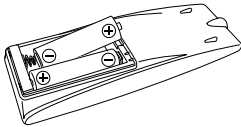
	Indicates that you press the button <b>briefly</b> .
	Indicates that you press the button <b>briefly and repeatedly</b> until an option you want is selected.
	Indicates that you press one of the buttons.
	Indicates that you <b>press and hold</b> the button for specified seconds. <ul style="list-style-type: none"> <li>• <i>The number above indicates the period of press (in this example, 2 seconds).</i></li> <li>• <i>If no number is indicated, press and hold until the entire procedure is complete or until you get a result you want.</i></li> </ul>
	Indicates that this operation is only possible using the remote control.

# Getting Started

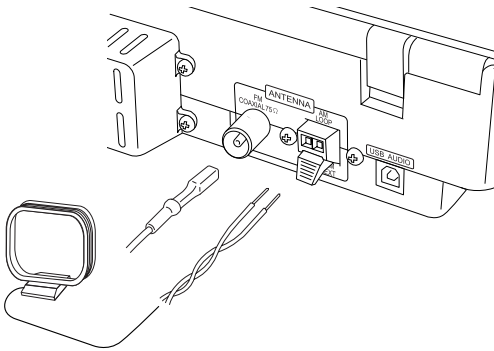
**Step 1:** Unpack the package and check the accessories.



**Step 2:** Prepare the remote control.



**Step 3:** Hook up the components such as AM/FM antennas, speakers, etc. (see pages 5 to 7).



Finally plug the AC power cord.  
Now you can operate the System.

## Step 1: Unpack

After unpacking, check to be sure that you have all the following items. The number in parentheses indicates the quantity of each piece supplied.

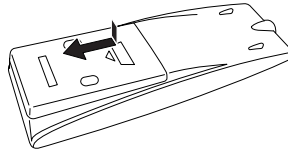
- FM antenna (1)
- AM loop antenna (1)
- Speaker cords (2)
- Remote control (1)
- Batteries (2)

If any item is missing, consult your dealer immediately.

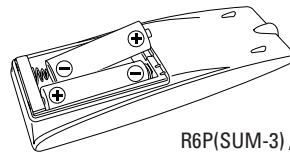
## Step 2: Prepare the Remote Control

Insert the batteries into the remote control by matching the polarity (+ and -) correctly.

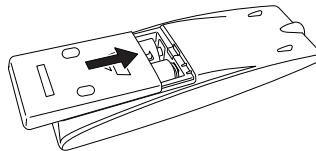
1



2



3



- DO NOT use an old battery together with a new one.
- DO NOT use different types of batteries together.
- DO NOT expose batteries to heat or flame.
- DO NOT leave the batteries in the battery compartment when you are not going to use the remote control for an extended period of time. Otherwise, the remote control will be damaged from battery leakage.

# Step 3

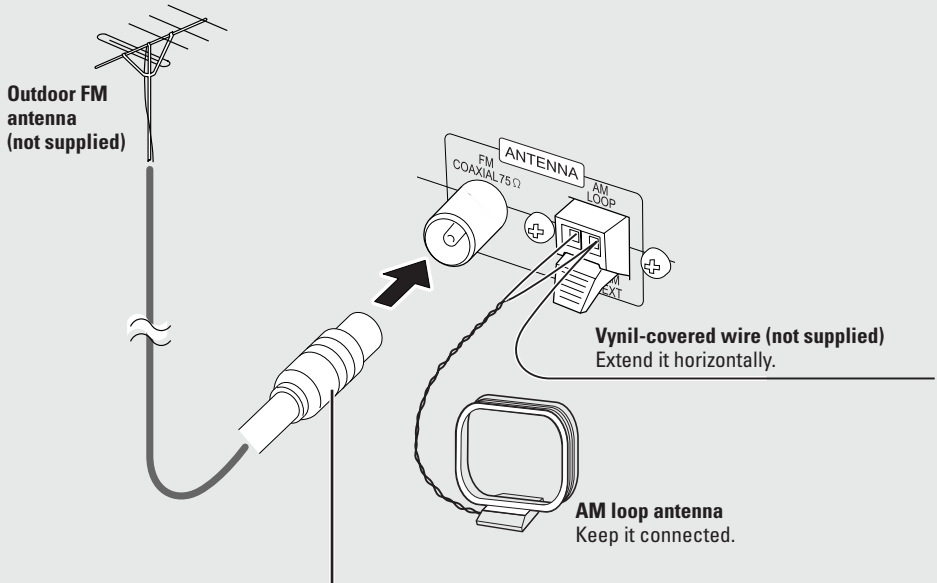
## Hook Up

If you need more detailed information, see page 7.

Illustrations of the input/output terminals below are typical examples. When you connect other components, refer also to their manuals since the terminal names actually printed on the rear may vary.

Turn the power off to all components before connections.

### For better FM/AM reception



Disconnect the supplied FM antenna, and connect to an outdoor FM antenna using a 75 Ω wire with coaxial type connector.

To a wall outlet  
Plug the AC power cord only after all connections are complete.



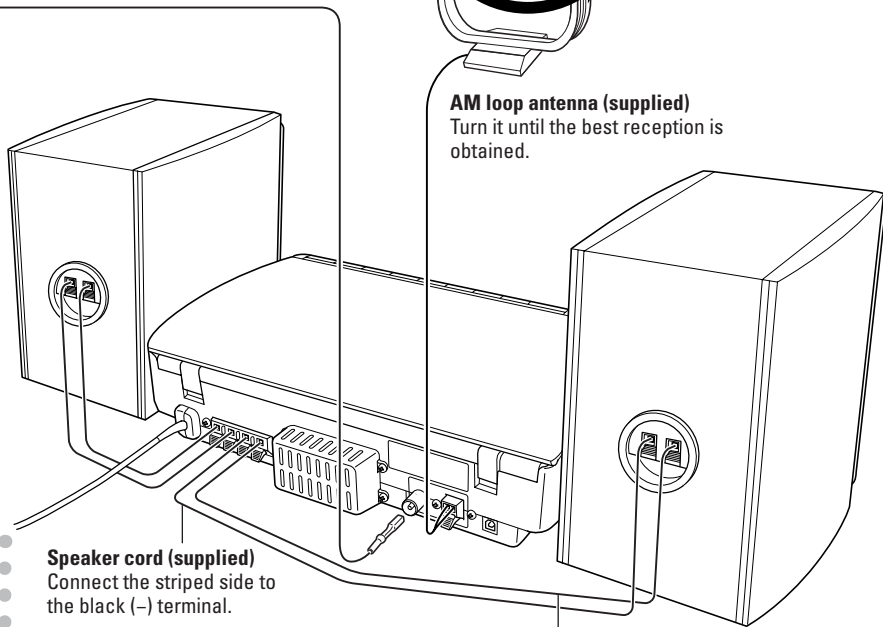
**FM antenna (supplied)**

Extend it so that you can obtain the best reception.



**AM loop antenna (supplied)**

Turn it until the best reception is obtained.

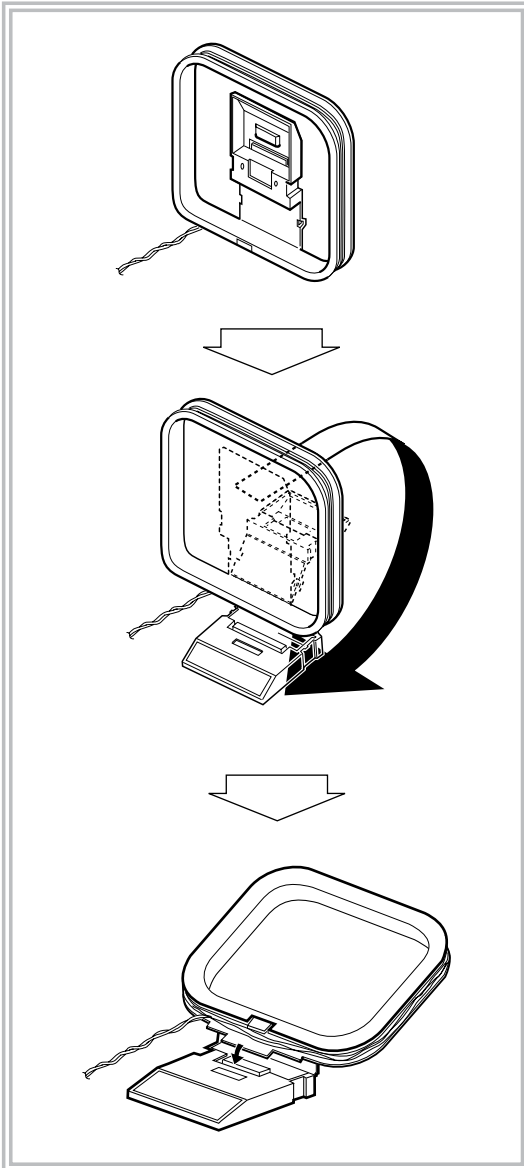


**Speaker cord (supplied)**  
Connect the striped side to the black (-) terminal.

**Speaker cord (supplied)**  
Connect the non-striped side to the red (+) terminal.

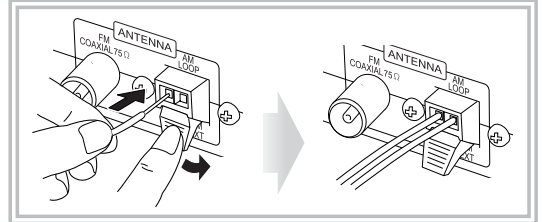
**To assemble and connect the AM loop antenna**

**To assemble the AM loop antenna**



**To connect the AM loop antenna**

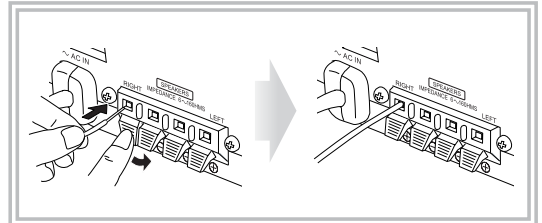
Make sure to connect the wire correctly.



- If the AM loop antenna wire or speaker cords are covered with vinyl, remove the vinyl to expose the tip of the antenna by twisting the vinyl.
- Make sure the antenna conductors do not touch any other terminals, connecting cords and power cord. Also, keep the antennas away from metallic parts of the System, connecting cords, and the AC power cord. This could cause poor reception.

**To connect the speaker cords**

Make sure the both speakers are connected correctly and firmly.

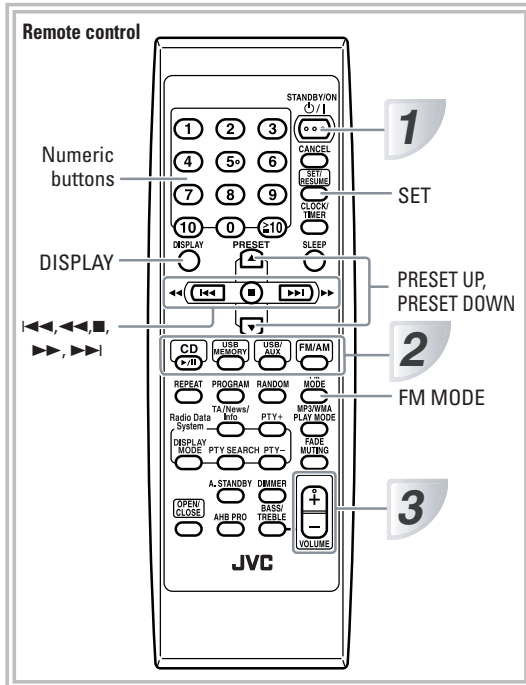


When connecting the speaker cords, match the polarity of the speaker terminals.  
 Red (+) terminal : non-stripped side of the speaker cord  
 Black (-) terminal : striped side of the speaker cord



- DO NOT connect more than one speaker to each terminal.
- DO NOT allow the conductor of the speaker cords to be in touch with the metallic parts of the System.





## 1 Turn on the power.

The STANDBY lamp on the main unit turns off.

- Without pressing STANDBY/ON  $\phi$ /I, the System turns on by pressing one of the source selecting buttons in the next step.

## 2 Select the source.

Playback automatically starts if the selected source is ready to start.

- If you press USB MEMORY or USB/AUX, start playback source on the external component.

## 3 Adjust the volume.

## 4 Operate the target source as explained later.

### To turn off (stand by) the System

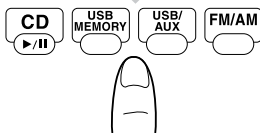
1



The STANDBY lamp on the main unit lights up.

- A small amount of power is always consumed even while on standby.

2



### For private listening

Connect a pair of headphones to the PHONES jack on the main unit. The sound will no longer come out of the speakers. Be sure to turn down the volume before connecting or putting the headphones.

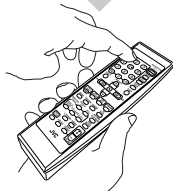
- Disconnecting the headphones will activate the speakers again.

3



**STOP!** DO NOT turn off (stand by) the System with the volume set to an extremely high level; otherwise, the sudden blast of sound can damage your hearing, speakers and/or headphones when you turn on the System or start playback.

4



### To display the clock indication

While the System is turned on...

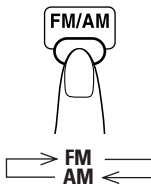
DISPLAY



- Press the button again, to return to the source information.

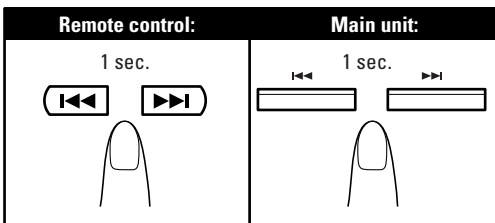
### Listening to the Radio

#### To select the band (FM or AM)



#### To tune in to a station

While FM or AM is selected...



Frequency starts changing on the display. When a station (frequency) with sufficient signal strength is tuned in, the frequency stops changing.

- When you repeatedly press the button, the frequency changes step by step.

To stop searching manually, press either button.

#### If the received FM station is hard to listen



The MONO indicator lights on the display.

Reception will improve though stereo effect is lost—Monaural reception mode.

To restore the stereo effect, press the button again (the MONO indicator goes off).

### To preset the stations

You can preset 30 FM and 15 AM stations.

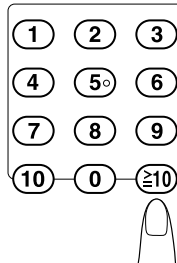
**1** Tune in to a station you want to preset.

**2** Activate the preset number entry mode.



- Finish the following process while the indication on the display is flashing.

**3** Select a preset number for the station you store.



#### Examples:

To select preset number 5, press 5.

To select preset number 15, press  $\geq 10 \rightarrow 1 \rightarrow 5$ .

To select preset number 20, press  $\geq 10 \rightarrow 2 \rightarrow 0$ .

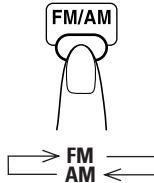
**4** Store the station.



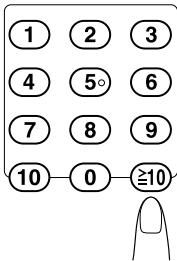
## To tune in to a preset station



- 1 Select a band (FM or AM).



- 2 Select a preset number for the station you store.



- You can also use the PRESET (UP/DOWN).

## Playing Back a Disc

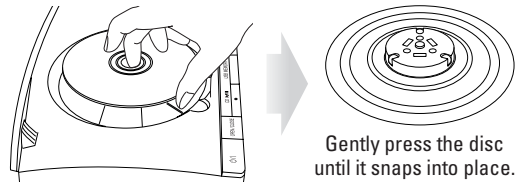
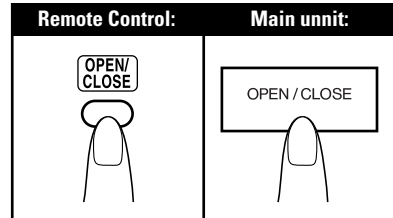
This System can play back the following discs—regular CD and CD-R/CD-RW (recorded either in the audio CD, MP3, or WMA format).

Disc Type	Mark (logo)
Audio CD	
CD-R	
CD-RW	

- Caution for DualDisc playback**  
The Non-DVD side of a “DualDisc” does not comply with the “Compact Disc Digital Audio” standard. Therefore, the use of Non-DVD side of a DualDisc on this product may not be recommended.

## To set a disc

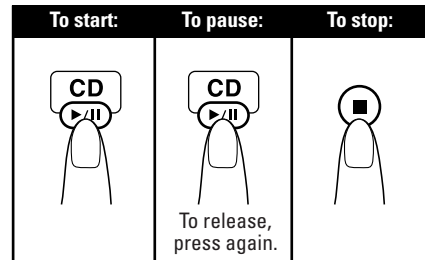
You can set a disc while playing another source. Press the OPEN/CLOSE button.



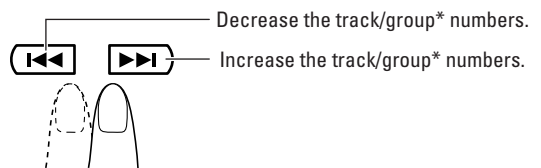
Gently press the disc until it snaps into place.

To close the disc cover, press the OPEN/CLOSE button again.

- When the cover is open, pressing CD ►/|| closes the cover and the playback starts.



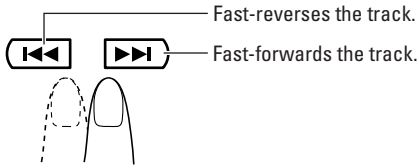
## To select a track/group\*



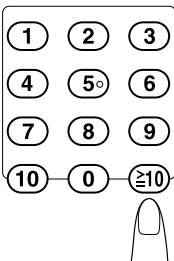
- \* For details about the group selection, see “For MP3/WMA playback” on page 13.

### To locate a particular portion

While playing a disc, press and hold until the portion you want is reached.



### To locate a track directly and start play



#### Examples:

To select track number 5, press 5.

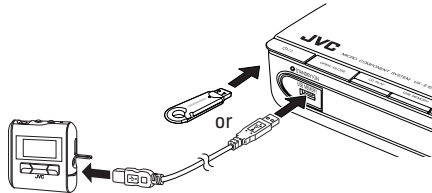
To select track number 15, press  $\geq 10 \rightarrow 1 \rightarrow 5$ .

To select track number 20, press  $\geq 10 \rightarrow 2 \rightarrow 0$ .

To select track number 125 (for MP3/WMA only), press  $\geq 10 \rightarrow 1 \rightarrow 2 \rightarrow 5$ .

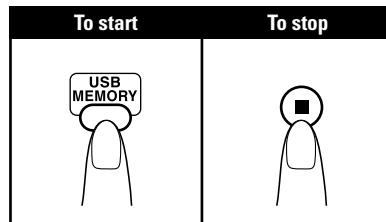
### To connect the USB Memory or DAP

Connect the DAP to the System using the USB cable supplied with the DAP.



- Use a USB cable with a “series A” plug at the System end.
- When disconnecting the USB Memory or DAP, make sure that playback is finished and that the System is in the stop condition.

### To play back sounds on the USB Memory or DAP



- The USB MEMORY lamp on the left of the USB MEMORY terminal flashes while USB MEMORY is selected for the source.

### Playing Back from the USB Memory or Digital Audio Player

This System is equipped with a USB MEMORY terminal on the front panel. You can connect your USB Memory or Digital Audio Player (DAP) to this terminal and enjoy the sound out of your USB Memory or DAP.

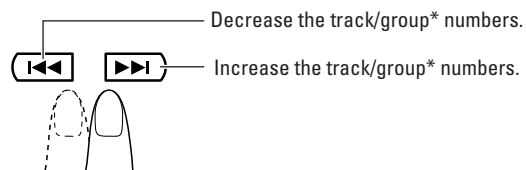
- Remember you cannot send any signal or data to your PC from this System.

#### IMPORTANT

- Always set volume to “VOL MIN” when connecting or disconnecting the other equipment.
- Connect the USB Memory or DAP directly to the front panel of the unit. Connecting via a USB hub may result in malfunction.
- USB Memory and DAPs compatible with the USB mass storage class specifications are connectable.
- Some DAPs are not compatible with the unit.
- Copyrighted tracks (WMA-DRM\* tracks) cannot be played on the unit.
- Coded or encrypted tracks in a special method cannot be played on the unit.

\* DRM (Digital Rights Management): Any of several technical methods used to control or restrict the use of digital media content on electronic devices with such technologies installed.

### To select a track/group\*



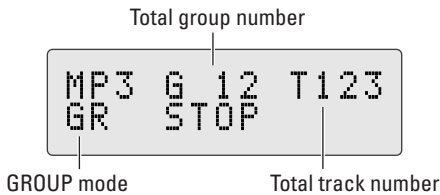
\* For details about the group selection, see “For MP3/WMA playback” on page 13.

### For MP3/WMA playback

According to the MP3/WMA playback mode, **⏪** / **⏩** or number buttons work for the group selection or the track selection.

#### Examples:

When the MP3 play back mode is "GROUP."



You can change the MP3/WMA playback mode by pressing MP3/WMA PLAY MODE.

- Each time you press the button, the MP3/WMA playback mode changes as follows:



#### MP3/WMA PLAY MODE



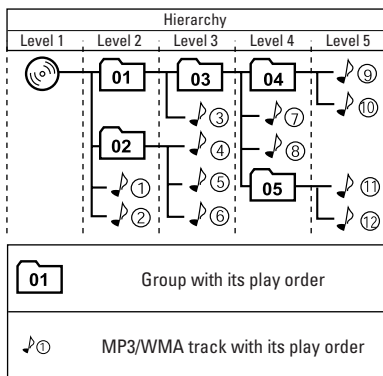
**TRACK: MODE** **⏪** / **⏩**, and number buttons work for the track selection of the MP3/WMA.

**GROUP: MODE** **⏪** / **⏩**, and number buttons work for the group selection of the MP3/WMA.

### MP3/WMA groups/tracks configuration

This System plays back MP3/WMA tracks as follows. The play order in the figure is for MP3/WMA tracks on the disc.

MP3/WMA tracks on USB Memory or DAP may be played back differently.

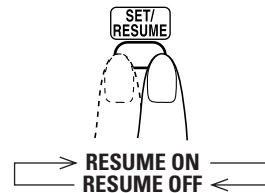


### Resume Play for MP3/WMA

If you press **■** while playing MP3/WMA, the number of the track where you have stopped playback will be memorized by the unit.

By pressing **CD** **▶** / **■** or **USB MEMORY**, you can start playback again from the beginning of the same track.

To activate/cancel resume play



#### memo

- Pressing **OPEN/CLOSE** (for Disc), or disconnecting the USB Memory/DAP will erase the track number for resume play.
- To play back from the first track while resume play is activated, press **■** twice during playback.

### Playing Back from the PC

This System is equipped with a USB terminal on the rear panel. You can connect your PC to this terminal and enjoy the sound out of your PC. When you connect your PC for the first time, follow the procedure below.

- Remember you cannot send any signal or data to your PC from this System.

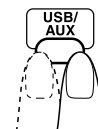
#### IMPORTANT

- Always set volume to "VOL MIN" when connecting or disconnecting the other equipment.

### How to install the USB drivers

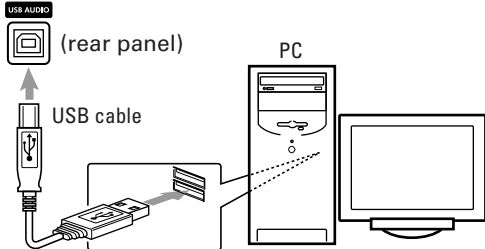
- 1 Turn on your PC and start running Windows® 98, Windows® 98SE, Windows® Me, Windows® 2000, or Windows® XP.
  - If the PC has been turned on, quit all the applications running.

- 2 Select USB for the source.





**3** Connect the System to the PC using a USB cable (not supplied).



- Use “USB series A plug to B plug” cable.

**4** The USB drivers are installed automatically.

**To play back sounds on the PC**

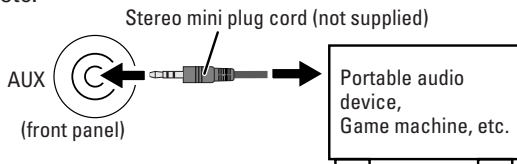
Refer to the manuals supplied with the sound reproducing application installed in the PC.

\* Microsoft®, Windows® 98, Windows® 98SE, Windows® Me, Windows® 2000 and Windows® XP are registered trademarks of Microsoft corporation.

**Playing Back from Other Equipment**

**To connect other equipment**

By using a stereo mini plug cord (not supplied), you can connect other equipment with analog audio output jacks, such as an MD player, a TV, etc.



**If the audio output on the other equipment is not stereo mini plug type,**

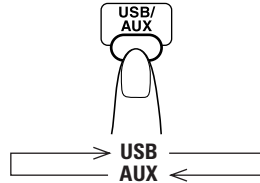
Use a plug adapter to convert the stereo mini plug to the corresponding plug to the audio output.

- Refer to the manuals supplied with the other equipment.

**IMPORTANT**

- Always set volume to “VOL MIN” when connecting or disconnecting the other equipment.

**To select other equipment for the source**



**To adjust the sound input level from other equipment**

You can adjust the sound input level from the connected equipment, if the incoming signal is too small or too large.

**1** Select AUX for the source.

**2** Adjust the input level by holding down SET until the input level appears on the display.



- Each time you hold down SET, the display changes in the following order.



LEVEL 1: Ordinary input level (factory setting).  
LEVEL 2: Increased input level.

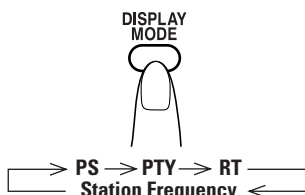
**Receiving FM Stations with Radio Data System**

Radio Data System allows FM stations to send additional signals with their regular program signals. For example, the stations send their station names, and information about what type of program they broadcast, such as sports or music, etc. This unit can receive the following types of Radio Data System signals:

- PS (Program Service):** shows commonly known station names.
- PTY (Program Type):** shows types of broadcast program.
- RT (Radio Text):** shows text messages the station sends.

### To show Radio Data System signals on the display

Select an FM station with Radio Data System signals.  
If a station contains the signals, "PS" appears on the display.



#### PS (Program Service):

While searching, "PS" alternately appear on the display. Then, the station name appears. "NO PS" appears if no signal is sent.

#### PTY (Program Type):

While searching, "PTY" alternately appear on the display. Then, the broadcast program type appears. "NO PTY" appears if no signal is sent.

#### RT (Radio Text):

While searching, "RT" alternately appear on the display. Then, the text message sent by the station appears. "NO RT" appears if no signal is sent.

#### Station Frequency:

The frequency of the selected station appears on the display.



#### memo

- If searching finishes at once, "PS", "PTY" and "RT" will not appear on the display.
- If you press DISPLAY MODE while listening to an AM (MW) station, the display only shows station frequency.

### On characters displayed

When the display shows PS, PTY or RT text, the display cannot show accented letters; For example, "A" may represent accented "A's" like "Á, Â, Ã, Ä, Å and Ä".

### To search for a program by the PTY codes

One of the advantages of the Radio Data System service is that you can locate a particular kind of program by specifying the PTY codes.

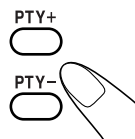
### To search for a program using PTY codes:

- 1 While listening to an FM station, activate PTY search.

PTY SEARCH



- 2 Select a desired PTY code while "SELECT PTY" is blinking.



Each time you press the button, the display shows a PTY category in the following order:

NEWS ⇄ AFFAIRS ⇄ INFO ⇄ SPORT ⇄ EDUCATE  
⇄ DRAMA ⇄ CULTURE ⇄ SCIENCE ⇄ VARIED  
⇄ POP M ⇄ ROCK M ⇄ EASY M ⇄ LIGHT M ⇄  
CLASSICS ⇄ OTHER M ⇄ WEATHER ⇄ FINANCE  
⇄ CHILDREN ⇄ SOCIAL ⇄ RELIGION ⇄ PHONE  
IN ⇄ TRAVEL ⇄ LEISURE ⇄ JAZZ ⇄ COUNTRY ⇄  
NATION M ⇄ OLDIES ⇄ FOLK M ⇄ DOCUMENT  
⇄ TEST ⇄ ALARM ⇄ NEWS

- 3 Start searching while the selected PTY code is blinking.

PTY SEARCH



While searching, "SELECT PTY" and the selected PTY code (ex. NEWS) alternately appear on the display.

The unit searches the 30 preset stations and stops when it finds a station of the selected category, then tunes into that station. The Radio Data System indicator turns on.

To continue searching after the first stop, press PTY SEARCH again within 5 seconds while the selected PTY code is blinking.

**To stop searching at any time during the process,** press PTY SEARCH to stop search operation. Tune in again into your desired FM station.

If no program is found in the 30 preset stations, "NOT FOUND" appears on the display and returns to the previous station.

### ○ **Descriptions of the PTY Codes**

<b>NEWS:</b>	News
<b>AFFAIRS:</b>	Topical programs expanding on the current news or affairs
<b>INFO:</b>	Programs on medical service, weather forecasts, etc.
<b>SPORT:</b>	Sports events
<b>EDUCATE:</b>	Educational programs
<b>DRAMA:</b>	Radio plays
<b>CULTURE:</b>	Programs on national or regional culture
<b>SCIENCE:</b>	Programs on natural sciences and technology
<b>VARIED:</b>	Other programs like comedies or ceremonies
<b>POP M:</b>	Pop music
<b>ROCK M:</b>	Rock music
<b>EASY M:</b>	Middle-of-the road music (usually called "easy listening")
<b>LIGHT M:</b>	Light music
<b>CLASSICS:</b>	Classical music
<b>OTHER M:</b>	Other music
<b>WEATHER:</b>	Weather information
<b>FINANCE:</b>	Reports on commerce, trading, the Stock Market, etc.
<b>CHILDREN:</b>	Entertainment programs for children
<b>SOCIAL:</b>	Programs on social activities
<b>RELIGION:</b>	Programs dealing with any aspect of belief or faith, or the nature of existence or ethics
<b>PHONE IN:</b>	Programs where people can express their views either by phone or in a public form
<b>TRAVEL:</b>	Programs about travel destinations, package tours, and travel ideas and opportunities
<b>LEISURE:</b>	Programs concerned with recreational activities such as gardening, cooking, fishing, etc.
<b>JAZZ:</b>	Jazz music
<b>COUNTRY:</b>	Country music
<b>NATION M:</b>	Current popular music from another nation region, in that country's language
<b>OLDIES:</b>	Classic pop music
<b>FOLK M:</b>	Folk music

**DOCUMENT:** Programs dealing with factual matters, presented in an investigative style

**TEST:** Broadcasts for testing emergency broadcast equipment or unit

**ALARM:** Emergency announcement

**NONE:** No program type, undefined program, or difficult to categorize into particular types

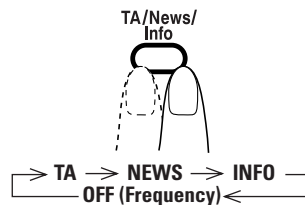
### **To temporarily switch to a broadcast program of your choice (Enhanced Other Networks)**

Another convenient feature of Radio Data System is to switch automatically from the current station to the type of program you have selected (TA, NEWS or INFO). When the program is finished, the unit automatically returns to the previous station. This function is called the Enhanced Other Networks.

- *The Enhanced Other Networks function is only applicable to the preset stations. See page 10.*
- *If an FM station does not broadcast Enhanced Other Networks information, the Enhanced Other Networks function cannot be activated.*

### ○ **To select a program type**

While listening to an FM station, activate the Enhanced Other Networks function.



**TA:** Traffic Announcement

**NEWS:** News

**INFO:** Programs on medical service, weather forecast, etc.

**OFF (Frequency):** Radio Data System mode off

- *The Radio Data System indicator on the display (TA, News or Info) turns on and the unit enters the Enhanced Other Networks standby mode.*

---

## ○ **How Enhanced Other Networks works**

**If no station is broadcasting the type of program you have selected:**

- The unit continues to receive the current station.
- When the selected type of program starts on a different station, the unit automatically switches to the station and the indicator on the display starts blinking.
- When the program is finished, the unit returns to the previous station and the indicator on the display turns on (standby mode).

**If there is a station broadcasting the type of program you have selected:**

- The unit switches to the station and the indicator on the display starts blinking.
- When the program is finished, the unit returns to the previous station and the indicator on the display turns on (standby mode).

**If the current station is broadcasting the type of program you have selected:**

- The unit continues to receive the current station. The indicator on the display starts blinking.
- When the program is finished, the indicator on the display turns on (standby mode).

## ○ **To cancel Enhanced Other Networks**

Press TA/News/Info to select "OFF (Frequency)".



### **memo**

- The Enhanced Other Networks standby mode remains activated if you change the source to CD, USB MEMORY or USB/AUX. If you select AM for the source, the Enhanced Other Networks standby mode is disabled temporarily.

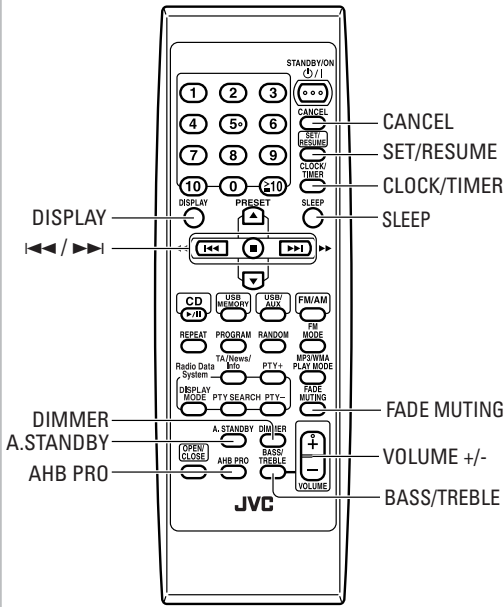


### **CAUTION:**

- When the sound alternates intermittently between the station tuned in by the Enhanced Other Networks function and the currently selected station, cancel the Enhanced Other Networks mode. This does not constitute malfunction of the unit.
-

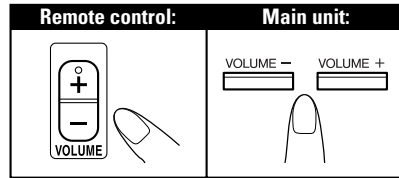
# Daily Operations — Sound & Other Adjustments —

## Remote control



## Adjusting the Volume

You can adjust the volume level from level 0 (VOLUME-MIN) to level 31 (VOLUME-MAX).



To drop the volume in a moment 



To restore the volume, press again, or adjust the volume level.

## Adjusting the Sound

To reinforce the bass sound — **AHB PRO** 

You can reinforce the bass sound to maintain rich, full bass at low volume.

AHB PRO



→ AHB PRO ON  
← AHB PRO OFF (Canceled) ←

To adjust the tone — **BASS/TREBLE** 

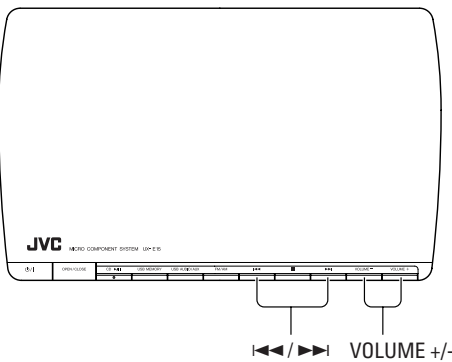
You can adjust the bass and treble level from 0 to +5/-5.

To adjust the bass

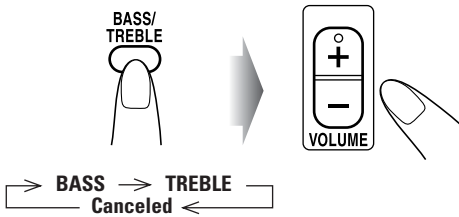


→ BASS → TREBLE  
← Canceled ←

## Main unit

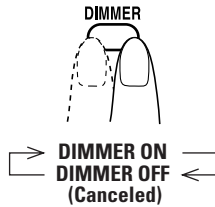


○ **To adjust the treble**



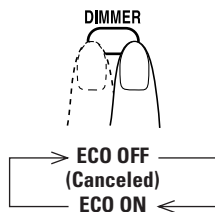
.....  
**Changing the Display Brightness**  
 — DIMMER

You can dim the display window.



**memo**

- If you press the button while the system is turned off, the clock indication turns off and the system goes into the ECO mode, reducing the standby power consumption.



.....  
**Setting the Clock**

Without setting the built-in clock, you cannot use the DailyTimer and sleepTimer (see page 24).

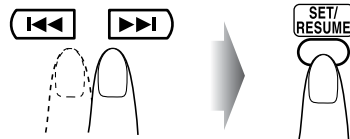
- To exit from the clock setting, press **CLOCK/TIMER** as required.
- To go back to the previous step, press **CANCEL**.

**1** Activate the clock setting mode.

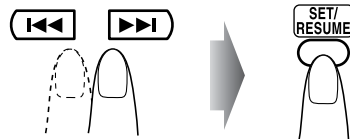


- If you have already adjusted the clock before, press the button repeatedly until the clock setting mode (see page 24) is selected.

**2** Adjust the hour.

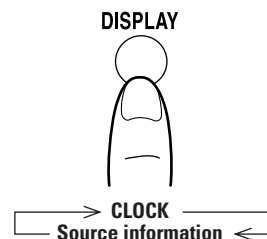


**3** Adjust the minute.



The built-in clock starts working.

○ **To check the current time during play**



○ **If there is a power failure**

The clock loses the setting and is reset to "00:00. (blinking)" You need to set the clock again.

## Turning Off the Power Automatically

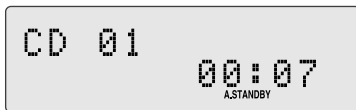


### To turn off the System after playback is over — Auto Standby

A. STANDBY



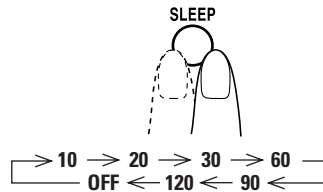
When Auto Standby is in use, the A.STANDBY indicator lights on the display.



When the disc playback stops, the A.STANDBY indicator starts flashing. If no operation is done for about 3 minutes while the indicator is flashing, the System turns off (stands by) automatically.

### To turn off the System after a certain period of time — Sleep Timer

#### 1 Specify the time (in minutes).



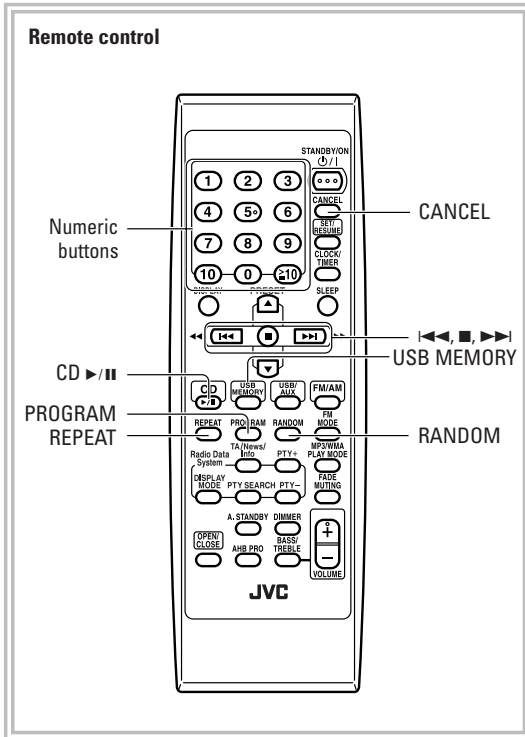
#### 2 Wait until the set time goes off.

#### ○ To check the time remaining before the shut-off time



- If you press the button repeatedly, you can change the shutoff time.

# Advanced Disc/USB Memory/DAP Operations



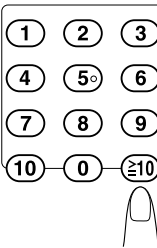
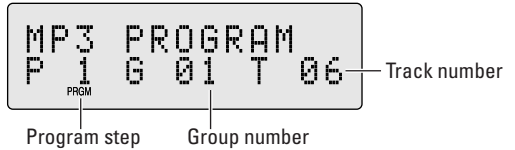
## 2 Select tracks you want for Program Play.

For CD



For MP3/WMA

Select the group first, then the track.



### Examples:

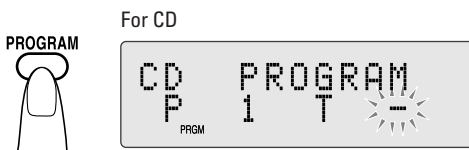
- To select track number 5, press 5.
- To select track number 15, press ≥10 → 1 → 5.
- To select track number 20, press ≥10 → 2 → 0.
- To select track number 125 (for MP3/WMA only), press ≥10 → 1 → 2 → 5.

## Programming the Playing Order—Program Play

You can arrange the playing order of the tracks (up to 32) before you start playback.

- You can repeat all the programmed tracks by pressing REPEAT.

### 1 Before starting playback, press PROGRAM.



For CD



For MP3/WMA



### 3 Repeat steps 2 to program the other tracks.

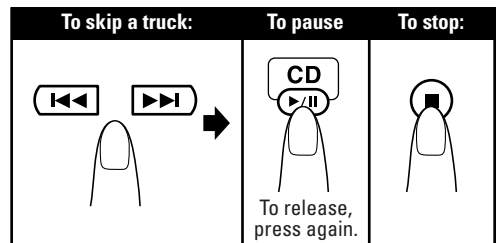
### 4 Start playback.



The tracks you have selected are played back in the order you have programmed.

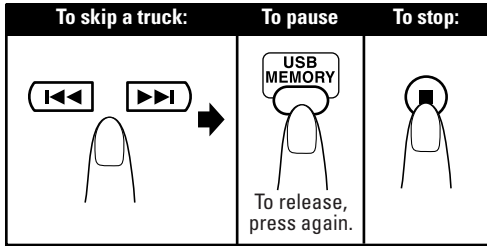


For CD



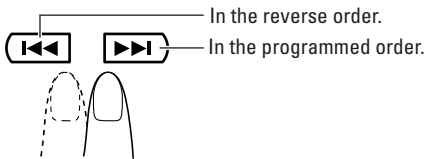


For MP3/WMA



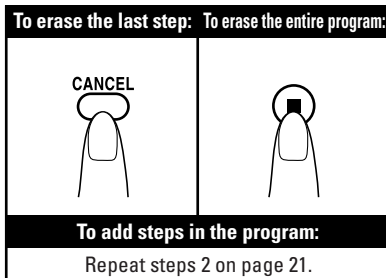
### To check the programmed contents

While the PRGM indicator is shown on the display and before play back...



### To modify the program

While the PRGM indicator is shown on the display...



### To exit from Program Play

While the PRGM indicator is shown on the display...



### Playing at Random — Random Play

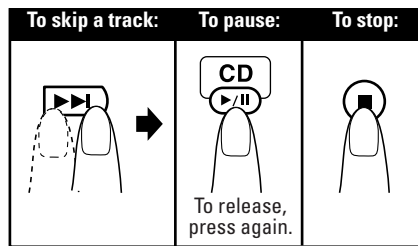


You can play back all the tracks on the disc at random.

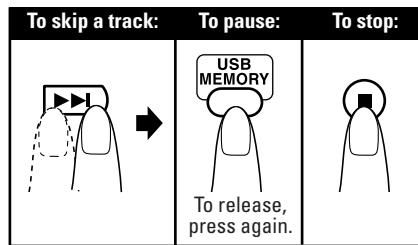


Playback starts in random order.  
Random Play ends when all tracks are played.

For CD



For USB Memory/DAP



- Pressing goes to the beginning of the current track.
- You can repeat All tracks ( All) by pressing REPEAT.

### To exit from Random Play

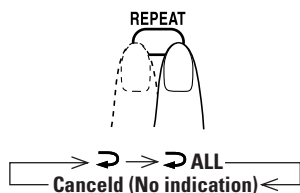
While the RND indicator is shown on the display...



## Playing Repeatedly — Repeat Play

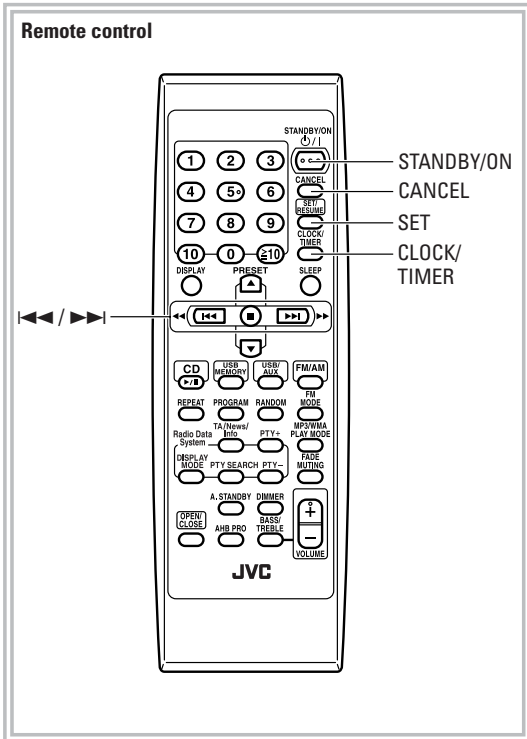


You can repeat playback.



↻	CD MP3/WMA (Track mode) MP3/WMA (Group mode)	Repeats the current track.
↻ ALL	CD MP3/WMA (Track mode)	Repeats all the tracks.
	MP3/WMA (Group mode)	Repeats all the tracks in the current group (for MP3/WMA playback mode in "GROUP" only).

# Timer Operations

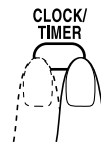


## ○ When the on-time comes

The System turns on, tunes in to the selected source, and sets the volume level to the preset level.

- When selecting “FM (AM) – –,” the last tuned station will be selected for Daily Timer.
- While Daily Timer is working, the timer indicator flashes on the display.
- The timer setting remains in memory until you change it.
- Without canceling the Daily Timer, you can change the source or adjust the volume after Daily Timer starts playback.

## 1 Select the timer setting mode.



→ Current timer settings → Timer setting  
Canceled (normal display) ← Clock setting (see page 19) ←



## Setting the Timer

Using DailyTimer, you can wake up with music, etc.

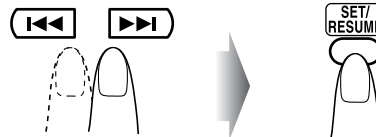
- To exit from the timer setting, press **CLOCK/TIMER** repeatedly until the current status (normal operation) is displayed.
- To correct a misentry during the process, press **CANCEL**.  
You can return to the previous step.

### How Daily Timer actually works

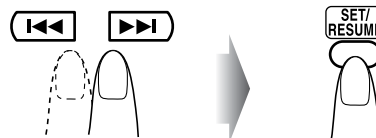
Once the DailyTimer has been set, the timer indicator are lit on the display. DailyTimer is activated at the same time everyday until the timer is turned off manually (see the next column).

## 2 Make the timer setting as you want.

- 1 Set the hour then the minute for on-time.



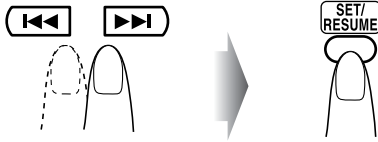
- 2 Set the hour then the minute for off-time in the same manner.
- 3 Select the playback source—“TUNER FM,” “TUNER AM,” “CD,” “USB,” or “AUX”.



**When selecting tuner:** Select a preset number or “FM (AM) – –” by pressing **◀▶** then press **SET**.

When you want to listen to sound from other equipment, you cannot use the Daily timer function to start playback on any equipment other than this product.

④ Set the volume.



- “SET OK” appears on the display followed by the timer settings you have entered.

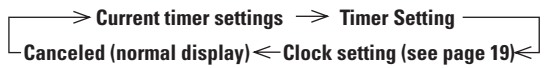
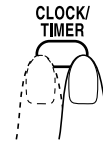
**3** Turn off the System (on standby) if you have set the timer with the System turned on.



**To turn off the Timer after its setting is done**


Since DailyTimer is activated at the same time everyday, you may need to cancel it on some particular days.

**1** Select the Timer setting mode.



**2** Turn off the Timer.



The timer indicator  turns off on the display and DailyTimer is canceled.

**To turn on the Timer again**, select “Current timer settings” in step 1 and press SET/RESUME.



# Additional Information

## Learning More about This System

### Daily Operations—Playback (see pages 9 to 17)

#### Listening to the Radio:

- If you store a new station into an occupied preset number, the previously stored station in that number will be erased.
- When you unplug the AC power cord or if a power failure occurs, the preset stations will be erased in a few days. If this happens, preset the stations again.

#### Playing Back a Disc/USB Memory/DAP:

- This System cannot play “packet write” discs.
- For MP3/WMA playback...
  - MP3/WMA discs are required a longer readout time than regular CDs. (It depends on the complexity of the group/file configuration.)
  - Some MP3/WMA files cannot be played back and will be skipped. This result from their recording processes and conditions.
  - When making MP3/WMA discs, use ISO 9660 Level 1 for the disc format.
  - This System can play back MP3/WMA files with the extension code <.mp3> or <.wma> (regardless of the letter case—upper/lower).
  - Some characters or symbols will not be shown correctly on the display. The maximum character number shown on the display is 32 (without the extension code) for files, and 30 for ID3 tag.
  - It is recommended that you make each MP3 file at a sampling rate of 44.1 kHz and at a bit rate of 128 kbps. Similarly each WMA file at a sampling rate of 44.1 kHz and at a bit rate of 96 kbps.
  - This System can recognize the total of 999 tracks and of 500 groups. Those exceeding the maximum number cannot be recognized.
  - Playback order of MP3/WMA tracks may be different from the one you have intended while recording. If a folder does not include MP3/WMA tracks, they are ignored.

### Receiving FM stations with Radio Data System

- If an “Alarm !” (Emergency) signal is received from a station while listening to the FM station with Radio Data System, the system automatically switches to the station broadcasting the “Alarm !” signal, except when you are listening to non-Radio Data System stations (all AM and some FM stations).

### Daily Operations — Sound & Other Adjustments (see pages 18 to 20)

#### Adjusting the Volume:

- Be sure to turn down the volume before connecting or putting the headphones.

#### Adjusting the Sound:

- This function also affects the sound through the headphones.

#### Setting the Clock:

- “00:00” will flash on the display until you set the clock.
- The clock may gain or lose 1 to 2 minutes per month. If this happens, reset the clock.

### Advanced Disc/USB Memory/DAP Operations (see pages 21 to 23)

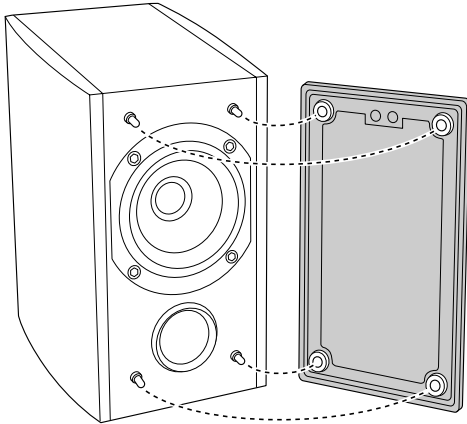
#### Programming the Playing Order — Program Play:

- If you try to program a 32nd track, “FULL MEMORY” appears on the display.
- While programming steps...
  - Your entry will be ignored if you have tried to program an item number that does not exist on the disc (for example, selecting track 14 on a disc that only has 12 tracks).

### Timer Operations (see pages 24 and 25)

- When you unplug the AC power cord or if a power failure occurs, the timer settings you entered will be erased. You need to set the clock first, then the timer again.
- If you activate Sleep Timer, Daily Timer, and Auto Standby simultaneously, the function that is set for the earliest time will be performed.

## To remove the speaker grilles



## Troubleshooting

If you are having a problem with your System, check this list for a possible solution before calling for service.

### General:

**Adjustments or settings are suddenly canceled before you finish.**

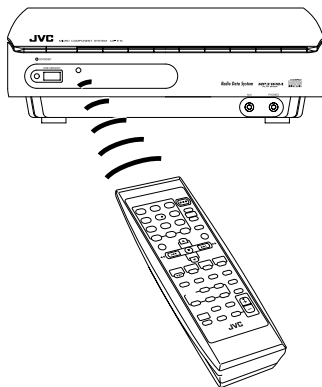
⇒ There is a time limit. Repeat the procedure again.

**Operations are disabled.**

⇒ The built-in microprocessor may malfunction due to external electrical interference. Unplug the AC power cord and then plug it back in.

**Unable to operate the System from the remote control.**

- ⇒ The path between the remote control and the remote sensor on the System is blocked.
- ⇒ Point it at the remote sensor on the front panel.
- ⇒ Signals cannot reach the remote sensor. More closer to the System.
- ⇒ The batteries are exhausted.



**No sound is heard from the speakers.**

- ⇒ Speaker connections are incorrect or loose (see page 7).
- ⇒ Headphones are connected (see page 9).

## Radio Operations:

**Hard to listen to broadcasts because of noise (see pages 4 to 7).**

- ⇒ Antennas connections are incorrect or loose.
- ⇒ The AM loop antenna is too close to the System.
- ⇒ The FM antenna is not properly extended and positioned.

## Disc/USB Memory/DAP Operations:

**The disc does not play.**

⇒ The disc is placed upside down. Place the disc with the label side up.

**ID3 Tag on an MP3 cannot be shown.**

⇒ There are two types of ID3 Tag—Version 1 and Version 2.

This System can only show ID3 Tag Version 1.

**MP3/WMA tracks do not play.**

⇒ Track names have the initial letter “.”.

**The disc sound is discontinuous.**

⇒ The disc is scratched or dirty.

**The disc cover does not open or close.**

⇒ The AC power cord is not plugged in.

## Timer Operations:

**Daily Timer does not work.**

⇒ The System has been turned on when the on-time comes.  
Timer starts working only when the System is turned off.

## Maintenance

To get the best performance of the System, keep your discs, and mechanism clean.

## Handling discs

- When removing the disc from its case, hold it at the edge while pressing the center hole lightly.
- Do not touch the shiny surface of the disc, or bend the disc.
- Put the disc back in its case after use to prevent warping.
- Be careful not to scratch the surface of the disc.
- Avoid exposure to direct sunlight, temperature extremes, and moisture.

### ○ To clean the disc:

Wipe the disc with a soft cloth in a straight line from center to edge.

### Cleaning the System

- Stains should be wiped off with a soft cloth. If the System is heavily stained, wipe it with a cloth soaked in water-diluted neutral detergent and wrung well, then wipe clean with a dry cloth.
- Since the System may deteriorate in quality, it become damaged or get its paint peeled off, be careful about the following:
  - DO NOT wipe it with a hard cloth.
  - DO NOT wipe it strongly.
  - DO NOT wipe it with thinner or benzine.
  - DO NOT apply any volatile substance such as insecticides to it.
  - DO NOT allow any rubber or plastic to remain in contact for a long time.

## Specifications

### Amplifier

Output Power 5 W per channel, min. RMS, driven into 6Ω at 1kHz, with no more than 10% total harmonic distortion (IEC268-3)

### Input Sensitivity/Impedance (1 kHz)

AUX IN LEVEL1 500 mV/47 kΩ  
LEVEL2 250 mV/47 kΩ  
USB Audio ver. 1.1  
USB Host ver. 1.1  
Speaker terminals 6 Ω - 16 Ω  
Phones 32 Ω - 1 kΩ  
15 mW/ch output into 32 Ω

### CD Player

Dynamic Range 85 dB  
Signal-To-Noise Ratio 85 dB  
Wow And Flutter Unmeasurable

### Tuner

FM Tuner  
Tuning Range 87.50 MHz - 108.00 MHz  
AM Tuner  
Tuning Range 522 kHz - 1 629 kHz

### Unit

Dimensions 260 mm × 75 mm × 185 mm (W/H/D)  
Mass Approx. 2.1 kg

### Speaker Specifications (each unit)

SP-UXE15  
Type Full range bass-reflex type  
Speaker Unit 8 cm cone x 1  
Power handling Capacity 10 W  
Impedance 6 Ω  
Frequency Range 135 Hz - 18 kHz  
Sound pressure level 81 dB/W • m  
Dimensions 118 mm × 197 mm × 165 mm (W/H/D)  
Mass Approx. 1.3 kg

### Accessories

See page 4

### Power Specifications

Power Requirements AC 230 V ~ 50 Hz  
Power Consumption 26 W (power on mode)  
5.5 W (in Standby mode)  
1.5 W (in Eco mode)

*Design and specifications are subject to change without notice.*







**JVC**